



Title Plan - LT 524368

Survey Number LT 524368
Surveyor Reference 1510-141209-01 Lakes Stage 3JKL
Surveyor Michael Peter Dewhirst
Survey Firm Harrison Grierson Consultants Ltd
Surveyor Declaration I Michael Peter Dewhirst, being a licensed cadastral surveyor, certify that:
(a) this dataset provided by me and its related survey are accurate, correct and in accordance with the Cadastral Survey Act 2002 and the Rules for Cadastral Survey 2010, and
(b) the survey was undertaken by me or under my personal direction.
Declared on 22 Aug 2018 03:03 PM

Survey Details

Dataset Description Lots 589-779, 915-925, 949-952 and 983-996 being a subdivision of Lot 1003 DP 494113
Status Approved as to Survey
Land District South Auckland
Submitted Date 22/08/2018
Survey Class Class A
Survey Approval Date 23/08/2018
Deposit Date

Territorial Authorities

Tauranga City

Comprised In

CT 734465

Created Parcels

Parcels	Parcel Intent	Area	CT Reference
Area CE Deposited Plan 524368	Easement		
Area CJ Deposited Plan 524368	Easement		
Area CK Deposited Plan 524368	Easement		
Area CL Deposited Plan 524368	Easement		
Area CM Deposited Plan 524368	Easement		
Lot 925 Deposited Plan 524368	Vesting on Deposit for Local Purpose Reserve	0.0004 Ha	837367
Area CF Deposited Plan 524368	Easement		
Area CG Deposited Plan 524368	Easement		
Lot 589 Deposited Plan 524368	Fee Simple Title	0.0539 Ha	836425
Lot 590 Deposited Plan 524368	Fee Simple Title	0.0778 Ha	836426
Lot 591 Deposited Plan 524368	Fee Simple Title	0.0568 Ha	836427
Lot 592 Deposited Plan 524368	Fee Simple Title	0.0644 Ha	836428
Lot 593 Deposited Plan 524368	Fee Simple Title	0.0581 Ha	836429
Lot 594 Deposited Plan 524368	Fee Simple Title	0.0600 Ha	836430
Lot 595 Deposited Plan 524368	Fee Simple Title	0.0802 Ha	836431
Lot 596 Deposited Plan 524368	Fee Simple Title	0.0719 Ha	836432
Lot 597 Deposited Plan 524368	Fee Simple Title	0.0646 Ha	836433
Lot 598 Deposited Plan 524368	Fee Simple Title	0.0630 Ha	836434
Lot 599 Deposited Plan 524368	Fee Simple Title	0.0714 Ha	836435
Lot 600 Deposited Plan 524368	Fee Simple Title	0.0501 Ha	836436

Title Plan - LT 524368

Created Parcels

Parcels	Parcel Intent	Area	CT Reference
Lot 601 Deposited Plan 524368	Fee Simple Title	0.0580 Ha	836437
Lot 602 Deposited Plan 524368	Fee Simple Title	0.0633 Ha	836438
Lot 603 Deposited Plan 524368	Fee Simple Title	0.0636 Ha	836439
Lot 604 Deposited Plan 524368	Fee Simple Title	0.0639 Ha	836440
Lot 605 Deposited Plan 524368	Fee Simple Title	0.0642 Ha	836441
Lot 606 Deposited Plan 524368	Fee Simple Title	0.0645 Ha	836442
Lot 607 Deposited Plan 524368	Fee Simple Title	0.0648 Ha	836443
Lot 608 Deposited Plan 524368	Fee Simple Title	0.0888 Ha	836444
Lot 609 Deposited Plan 524368	Fee Simple Title	0.0716 Ha	836445
Lot 610 Deposited Plan 524368	Fee Simple Title	0.0516 Ha	836446
Lot 611 Deposited Plan 524368	Fee Simple Title	0.0618 Ha	836447
Lot 612 Deposited Plan 524368	Fee Simple Title	0.0510 Ha	836448
Lot 613 Deposited Plan 524368	Fee Simple Title	0.0530 Ha	836449
Lot 614 Deposited Plan 524368	Fee Simple Title	0.0827 Ha	836450
Lot 615 Deposited Plan 524368	Fee Simple Title	0.0510 Ha	836451
Lot 616 Deposited Plan 524368	Fee Simple Title	0.0541 Ha	836452
Lot 617 Deposited Plan 524368	Fee Simple Title	0.0826 Ha	836453
Lot 618 Deposited Plan 524368	Fee Simple Title	0.0771 Ha	836454
Lot 619 Deposited Plan 524368	Fee Simple Title	0.0627 Ha	836455
Lot 620 Deposited Plan 524368	Fee Simple Title	0.0690 Ha	836456
Lot 621 Deposited Plan 524368	Fee Simple Title	0.0526 Ha	836457
Lot 622 Deposited Plan 524368	Fee Simple Title	0.0499 Ha	836458
Lot 623 Deposited Plan 524368	Fee Simple Title	0.0547 Ha	836459
Lot 624 Deposited Plan 524368	Fee Simple Title	0.0529 Ha	836460
Lot 625 Deposited Plan 524368	Fee Simple Title	0.0565 Ha	836461
Lot 626 Deposited Plan 524368	Fee Simple Title	0.0532 Ha	836462
Lot 627 Deposited Plan 524368	Fee Simple Title	0.0614 Ha	836463
Lot 628 Deposited Plan 524368	Fee Simple Title	0.0600 Ha	836464
Lot 629 Deposited Plan 524368	Fee Simple Title	0.0468 Ha	836465
Lot 630 Deposited Plan 524368	Fee Simple Title	0.0653 Ha	836466
Lot 631 Deposited Plan 524368	Fee Simple Title	0.0693 Ha	836467
Lot 632 Deposited Plan 524368	Fee Simple Title	0.0459 Ha	836468
Lot 633 Deposited Plan 524368	Fee Simple Title	0.0534 Ha	836469
Lot 634 Deposited Plan 524368	Fee Simple Title	0.0535 Ha	836470
Lot 635 Deposited Plan 524368	Fee Simple Title	0.0807 Ha	836471
Lot 636 Deposited Plan 524368	Fee Simple Title	0.0675 Ha	836472
Lot 637 Deposited Plan 524368	Fee Simple Title	0.0963 Ha	836473
Lot 638 Deposited Plan 524368	Fee Simple Title	0.0651 Ha	836474
Lot 639 Deposited Plan 524368	Fee Simple Title	0.0650 Ha	836475
Lot 640 Deposited Plan 524368	Fee Simple Title	0.0764 Ha	836476
Lot 641 Deposited Plan 524368	Fee Simple Title	0.0498 Ha	836477
Lot 642 Deposited Plan 524368	Fee Simple Title	0.0501 Ha	836478
Lot 643 Deposited Plan 524368	Fee Simple Title	0.0510 Ha	836479
Lot 644 Deposited Plan 524368	Fee Simple Title	0.0510 Ha	836480

Title Plan - LT 524368

Created Parcels

Parcels	Parcel Intent	Area	CT Reference
Lot 645 Deposited Plan 524368	Fee Simple Title	0.0512 Ha	836481
Lot 646 Deposited Plan 524368	Fee Simple Title	0.0511 Ha	836482
Lot 647 Deposited Plan 524368	Fee Simple Title	0.0510 Ha	836483
Lot 648 Deposited Plan 524368	Fee Simple Title	0.0511 Ha	836484
Lot 649 Deposited Plan 524368	Fee Simple Title	0.0511 Ha	836485
Lot 650 Deposited Plan 524368	Fee Simple Title	0.0512 Ha	836486
Lot 651 Deposited Plan 524368	Fee Simple Title	0.0512 Ha	836487
Lot 652 Deposited Plan 524368	Fee Simple Title	0.0503 Ha	836488
Lot 653 Deposited Plan 524368	Fee Simple Title	0.0499 Ha	836489
Lot 654 Deposited Plan 524368	Fee Simple Title	0.0508 Ha	836490
Lot 655 Deposited Plan 524368	Fee Simple Title	0.0508 Ha	836491
Lot 656 Deposited Plan 524368	Fee Simple Title	0.0645 Ha	836492
Lot 657 Deposited Plan 524368	Fee Simple Title	0.0644 Ha	836493
Lot 658 Deposited Plan 524368	Fee Simple Title	0.0584 Ha	836494
Lot 659 Deposited Plan 524368	Fee Simple Title	0.0549 Ha	836495
Lot 660 Deposited Plan 524368	Fee Simple Title	0.0649 Ha	836496
Lot 661 Deposited Plan 524368	Fee Simple Title	0.0525 Ha	836497
Lot 662 Deposited Plan 524368	Fee Simple Title	0.0525 Ha	836498
Lot 663 Deposited Plan 524368	Fee Simple Title	0.0541 Ha	836499
Lot 664 Deposited Plan 524368	Fee Simple Title	0.0514 Ha	836500
Lot 665 Deposited Plan 524368	Fee Simple Title	0.0463 Ha	836501
Lot 666 Deposited Plan 524368	Fee Simple Title	0.0515 Ha	836502
Lot 667 Deposited Plan 524368	Fee Simple Title	0.0515 Ha	836503
Lot 668 Deposited Plan 524368	Fee Simple Title	0.0482 Ha	836504
Lot 669 Deposited Plan 524368	Fee Simple Title	0.0697 Ha	836505
Lot 670 Deposited Plan 524368	Fee Simple Title	0.0686 Ha	836506
Lot 671 Deposited Plan 524368	Fee Simple Title	0.0772 Ha	836507
Lot 672 Deposited Plan 524368	Fee Simple Title	0.0682 Ha	836508
Lot 673 Deposited Plan 524368	Fee Simple Title	0.0636 Ha	836509
Lot 674 Deposited Plan 524368	Fee Simple Title	0.0670 Ha	836510
Lot 675 Deposited Plan 524368	Fee Simple Title	0.0675 Ha	836511
Lot 676 Deposited Plan 524368	Fee Simple Title	0.0675 Ha	836512
Lot 677 Deposited Plan 524368	Fee Simple Title	0.0675 Ha	836513
Lot 678 Deposited Plan 524368	Fee Simple Title	0.0675 Ha	836514
Lot 679 Deposited Plan 524368	Fee Simple Title	0.0617 Ha	836515
Lot 680 Deposited Plan 524368	Fee Simple Title	0.0730 Ha	836516
Lot 681 Deposited Plan 524368	Fee Simple Title	0.0988 Ha	836517
Lot 682 Deposited Plan 524368	Fee Simple Title	0.1401 Ha	836518
Lot 683 Deposited Plan 524368	Fee Simple Title	0.0934 Ha	836519
Lot 684 Deposited Plan 524368	Fee Simple Title	0.0720 Ha	836520
Lot 685 Deposited Plan 524368	Fee Simple Title	0.0640 Ha	836521
Lot 686 Deposited Plan 524368	Fee Simple Title	0.0547 Ha	836522
Lot 687 Deposited Plan 524368	Fee Simple Title	0.0540 Ha	836523
Lot 688 Deposited Plan 524368	Fee Simple Title	0.0539 Ha	836524

Title Plan - LT 524368

Created Parcels

Parcels	Parcel Intent	Area	CT Reference
Lot 689 Deposited Plan 524368	Fee Simple Title	0.0556 Ha	836525
Lot 690 Deposited Plan 524368	Fee Simple Title	0.0682 Ha	836526
Lot 691 Deposited Plan 524368	Fee Simple Title	0.0764 Ha	836527
Lot 692 Deposited Plan 524368	Fee Simple Title	0.0508 Ha	836528
Lot 693 Deposited Plan 524368	Fee Simple Title	0.0425 Ha	836529
Lot 694 Deposited Plan 524368	Fee Simple Title	0.0423 Ha	836530
Lot 695 Deposited Plan 524368	Fee Simple Title	0.0547 Ha	836531
Lot 696 Deposited Plan 524368	Fee Simple Title	0.0608 Ha	836532
Lot 697 Deposited Plan 524368	Fee Simple Title	0.0423 Ha	836533
Lot 698 Deposited Plan 524368	Fee Simple Title	0.0425 Ha	836534
Lot 699 Deposited Plan 524368	Fee Simple Title	0.0682 Ha	836535
Lot 700 Deposited Plan 524368	Fee Simple Title	0.0703 Ha	836536
Lot 701 Deposited Plan 524368	Fee Simple Title	0.0425 Ha	836537
Lot 702 Deposited Plan 524368	Fee Simple Title	0.1582 Ha	836538
Lot 703 Deposited Plan 524368	Fee Simple Title	0.0450 Ha	836539
Lot 704 Deposited Plan 524368	Fee Simple Title	0.0450 Ha	836540
Lot 705 Deposited Plan 524368	Fee Simple Title	0.1106 Ha	836541
Lot 706 Deposited Plan 524368	Fee Simple Title	0.1167 Ha	836542
Lot 707 Deposited Plan 524368	Fee Simple Title	0.1128 Ha	836543
Lot 708 Deposited Plan 524368	Fee Simple Title	0.1138 Ha	836544
Lot 709 Deposited Plan 524368	Fee Simple Title	0.1198 Ha	836545
Lot 710 Deposited Plan 524368	Fee Simple Title	0.1311 Ha	836546
Lot 711 Deposited Plan 524368	Fee Simple Title	0.1487 Ha	836547
Lot 712 Deposited Plan 524368	Fee Simple Title	0.0579 Ha	836548
Lot 713 Deposited Plan 524368	Fee Simple Title	0.1314 Ha	836549
Lot 714 Deposited Plan 524368	Fee Simple Title	0.1539 Ha	836550
Lot 715 Deposited Plan 524368	Fee Simple Title	0.0512 Ha	836551
Lot 716 Deposited Plan 524368	Fee Simple Title	0.0512 Ha	836552
Lot 717 Deposited Plan 524368	Fee Simple Title	0.0545 Ha	836553
Lot 718 Deposited Plan 524368	Fee Simple Title	0.2448 Ha	836554
Lot 719 Deposited Plan 524368	Fee Simple Title	0.2071 Ha	836555
Lot 720 Deposited Plan 524368	Fee Simple Title	0.0502 Ha	836556
Lot 721 Deposited Plan 524368	Fee Simple Title	0.0636 Ha	836557
Lot 722 Deposited Plan 524368	Fee Simple Title	0.0511 Ha	836558
Lot 723 Deposited Plan 524368	Fee Simple Title	0.0501 Ha	836559
Lot 724 Deposited Plan 524368	Fee Simple Title	0.0866 Ha	836560
Lot 725 Deposited Plan 524368	Fee Simple Title	0.0781 Ha	836561
Lot 726 Deposited Plan 524368	Fee Simple Title	0.0882 Ha	836562
Lot 727 Deposited Plan 524368	Fee Simple Title	0.0787 Ha	836563
Lot 728 Deposited Plan 524368	Fee Simple Title	0.0723 Ha	836564
Lot 729 Deposited Plan 524368	Fee Simple Title	0.0600 Ha	836565
Lot 730 Deposited Plan 524368	Fee Simple Title	0.0550 Ha	836566
Lot 731 Deposited Plan 524368	Fee Simple Title	0.0587 Ha	836567
Lot 732 Deposited Plan 524368	Fee Simple Title	0.0646 Ha	836568

Title Plan - LT 524368

Created Parcels

Parcels	Parcel Intent	Area	CT Reference
Lot 733 Deposited Plan 524368	Fee Simple Title	0.0540 Ha	836569
Lot 734 Deposited Plan 524368	Fee Simple Title	0.0534 Ha	836570
Lot 735 Deposited Plan 524368	Fee Simple Title	0.0533 Ha	836571
Lot 736 Deposited Plan 524368	Fee Simple Title	0.0543 Ha	836572
Lot 737 Deposited Plan 524368	Fee Simple Title	0.0572 Ha	836573
Lot 738 Deposited Plan 524368	Fee Simple Title	0.0630 Ha	836574
Lot 739 Deposited Plan 524368	Fee Simple Title	0.0721 Ha	836575
Lot 740 Deposited Plan 524368	Fee Simple Title	0.0701 Ha	836576
Lot 741 Deposited Plan 524368	Fee Simple Title	0.0590 Ha	836577
Lot 742 Deposited Plan 524368	Fee Simple Title	0.0539 Ha	836578
Lot 743 Deposited Plan 524368	Fee Simple Title	0.0553 Ha	836579
Lot 744 Deposited Plan 524368	Fee Simple Title	0.0461 Ha	836580
Lot 745 Deposited Plan 524368	Fee Simple Title	0.0458 Ha	836581
Lot 746 Deposited Plan 524368	Fee Simple Title	0.0596 Ha	836582
Lot 747 Deposited Plan 524368	Fee Simple Title	0.0494 Ha	836583
Lot 748 Deposited Plan 524368	Fee Simple Title	0.0495 Ha	836584
Lot 749 Deposited Plan 524368	Fee Simple Title	0.0494 Ha	836585
Lot 750 Deposited Plan 524368	Fee Simple Title	0.0494 Ha	836586
Lot 751 Deposited Plan 524368	Fee Simple Title	0.0512 Ha	836587
Lot 752 Deposited Plan 524368	Fee Simple Title	0.0524 Ha	836588
Lot 753 Deposited Plan 524368	Fee Simple Title	0.0506 Ha	836589
Lot 754 Deposited Plan 524368	Fee Simple Title	0.0500 Ha	836590
Lot 755 Deposited Plan 524368	Fee Simple Title	0.0500 Ha	836591
Lot 756 Deposited Plan 524368	Fee Simple Title	0.0413 Ha	836592
Lot 757 Deposited Plan 524368	Fee Simple Title	0.0447 Ha	836593
Lot 758 Deposited Plan 524368	Fee Simple Title	0.0451 Ha	836594
Lot 759 Deposited Plan 524368	Fee Simple Title	0.0399 Ha	836595
Lot 760 Deposited Plan 524368	Fee Simple Title	0.0400 Ha	836596
Lot 761 Deposited Plan 524368	Fee Simple Title	0.0400 Ha	836597
Lot 762 Deposited Plan 524368	Fee Simple Title	0.0400 Ha	836598
Lot 763 Deposited Plan 524368	Fee Simple Title	0.0371 Ha	836599
Lot 764 Deposited Plan 524368	Fee Simple Title	0.0418 Ha	836600
Lot 765 Deposited Plan 524368	Fee Simple Title	0.0420 Ha	836601
Lot 766 Deposited Plan 524368	Fee Simple Title	0.0413 Ha	836602
Lot 767 Deposited Plan 524368	Fee Simple Title	0.0503 Ha	836603
Lot 768 Deposited Plan 524368	Fee Simple Title	0.0472 Ha	836604
Lot 769 Deposited Plan 524368	Fee Simple Title	0.0400 Ha	836605
Lot 770 Deposited Plan 524368	Fee Simple Title	0.0400 Ha	836606
Lot 771 Deposited Plan 524368	Fee Simple Title	0.0400 Ha	836607
Lot 772 Deposited Plan 524368	Fee Simple Title	0.0399 Ha	836608
Lot 773 Deposited Plan 524368	Fee Simple Title	0.0433 Ha	836609
Lot 774 Deposited Plan 524368	Fee Simple Title	0.0413 Ha	836610
Lot 775 Deposited Plan 524368	Fee Simple Title	0.0500 Ha	836611
Lot 776 Deposited Plan 524368	Fee Simple Title	0.0500 Ha	836612

Title Plan - LT 524368

Created Parcels

Parcels	Parcel Intent	Area	CT Reference
Lot 777 Deposited Plan 524368	Fee Simple Title	0.0523 Ha	836613
Lot 778 Deposited Plan 524368	Fee Simple Title	0.0467 Ha	836614
Lot 779 Deposited Plan 524368	Fee Simple Title	0.0521 Ha	836615
Lot 915 Deposited Plan 524368	Vesting on Deposit for Road	1.0815 Ha	
Lot 916 Deposited Plan 524368	Vesting on Deposit for Road	0.8816 Ha	
Lot 917 Deposited Plan 524368	Vesting on Deposit for Road	0.1681 Ha	
Lot 918 Deposited Plan 524368	Vesting on Deposit for Road	0.2642 Ha	
Lot 919 Deposited Plan 524368	Vesting on Deposit for Road	0.2919 Ha	
Lot 920 Deposited Plan 524368	Vesting on Deposit for Road	0.5850 Ha	
Lot 921 Deposited Plan 524368	Vesting on Deposit for Road	0.6126 Ha	
Lot 922 Deposited Plan 524368	Vesting on Deposit for Road	0.2116 Ha	
Lot 923 Deposited Plan 524368	Vesting on Deposit for Local Purpose Reserve	0.0012 Ha	836616
Lot 924 Deposited Plan 524368	Vesting on Deposit for Local Purpose Reserve	0.0020 Ha	836617
Lot 949 Deposited Plan 524368	Vesting on Deposit for Local Purpose Reserve	4.4894 Ha	836618
Lot 950 Deposited Plan 524368	Vesting on Deposit for Recreation Reserve (Territorial Authority)	0.1619 Ha	836619
Lot 951 Deposited Plan 524368	Vesting on Deposit for Recreation Reserve (Territorial Authority)	0.3277 Ha	836620
Lot 952 Deposited Plan 524368	Vesting on Deposit for Recreation Reserve (Territorial Authority)	0.2172 Ha	836621
Lot 983 Deposited Plan 524368	Fee Simple Title	0.0092 Ha	Multiple
Lot 984 Deposited Plan 524368	Fee Simple Title	0.0305 Ha	Multiple
Lot 985 Deposited Plan 524368	Fee Simple Title	0.0211 Ha	Multiple
Lot 986 Deposited Plan 524368	Fee Simple Title	0.0132 Ha	Multiple
Lot 987 Deposited Plan 524368	Fee Simple Title	0.0106 Ha	Multiple
Lot 988 Deposited Plan 524368	Fee Simple Title	0.0334 Ha	Multiple
Lot 989 Deposited Plan 524368	Fee Simple Title	0.0387 Ha	Multiple
Lot 990 Deposited Plan 524368	Fee Simple Title	0.0110 Ha	Multiple
Lot 991 Deposited Plan 524368	Fee Simple Title	0.0112 Ha	Multiple
Lot 992 Deposited Plan 524368	Fee Simple Title	0.0112 Ha	Multiple
Lot 993 Deposited Plan 524368	Fee Simple Title	0.0113 Ha	Multiple
Lot 994 Deposited Plan 524368	Fee Simple Title	0.0133 Ha	Multiple

Title Plan - LT 524368

Created Parcels

Parcels	Parcel Intent	Area	CT Reference
Lot 995 Deposited Plan 524368	Fee Simple Title	0.0281 Ha	Multiple
Lot 996 Deposited Plan 524368	Fee Simple Title	0.0620 Ha	Multiple
Area A Deposited Plan 524368	Easement		
Area B Deposited Plan 524368	Easement		
Area C Deposited Plan 524368	Easement		
Area D Deposited Plan 524368	Easement		
Area E Deposited Plan 524368	Easement		
Area F Deposited Plan 524368	Easement		
Area G Deposited Plan 524368	Easement		
Area H Deposited Plan 524368	Easement		
Area I Deposited Plan 524368	Easement		
Area J Deposited Plan 524368	Easement		
Area K Deposited Plan 524368	Easement		
Area L Deposited Plan 524368	Easement		
Area M Deposited Plan 524368	Easement		
Area N Deposited Plan 524368	Easement		
Area O Deposited Plan 524368	Easement		
Area P Deposited Plan 524368	Easement		
Area Q Deposited Plan 524368	Easement		
Area R Deposited Plan 524368	Easement		
Area S Deposited Plan 524368	Easement		
Area T Deposited Plan 524368	Easement		
Area U Deposited Plan 524368	Easement		
Area V Deposited Plan 524368	Easement		
Area W Deposited Plan 524368	Easement		
Area X Deposited Plan 524368	Easement		
Area Y Deposited Plan 524368	Easement		
Area Z Deposited Plan 524368	Easement		
Area AA Deposited Plan 524368	Easement		
Area AB Deposited Plan 524368	Easement		
Area AC Deposited Plan 524368	Easement		
Area AD Deposited Plan 524368	Easement		
Area AE Deposited Plan 524368	Easement		
Area AF Deposited Plan 524368	Easement		
Area AG Deposited Plan 524368	Easement		
Area AH Deposited Plan 524368	Easement		
Area AI Deposited Plan 524368	Easement		
Area AJ Deposited Plan 524368	Easement		
Area AK Deposited Plan 524368	Easement		
Area AL Deposited Plan 524368	Easement		
Area AM Deposited Plan 524368	Easement		
Area AN Deposited Plan 524368	Easement		
Area AO Deposited Plan 524368	Easement		
Area AP Deposited Plan 524368	Easement		

Title Plan - LT 524368

Created Parcels

Parcels	Parcel Intent	Area	CT Reference
Area AQ Deposited Plan 524368	Easement		
Area AR Deposited Plan 524368	Easement		
Area AS Deposited Plan 524368	Easement		
Area AT Deposited Plan 524368	Easement		
Area AU Deposited Plan 524368	Easement		
Area AV Deposited Plan 524368	Easement		
Area AW Deposited Plan 524368	Easement		
Area AX Deposited Plan 524368	Easement		
Area AY Deposited Plan 524368	Easement		
Area AZ Deposited Plan 524368	Easement		
Area BA Deposited Plan 524368	Easement		
Area BB Deposited Plan 524368	Easement		
Area BC Deposited Plan 524368	Easement		
Area BD Deposited Plan 524368	Easement		
Area BE Deposited Plan 524368	Easement		
Area BF Deposited Plan 524368	Easement		
Area BG Deposited Plan 524368	Easement		
Area BH Deposited Plan 524368	Easement		
Area BI Deposited Plan 524368	Easement		
Area BJ Deposited Plan 524368	Easement		
Area BK Deposited Plan 524368	Easement		
Area BL Deposited Plan 524368	Easement		
Area BM Deposited Plan 524368	Easement		
Area BN Deposited Plan 524368	Easement		
Area BO Deposited Plan 524368	Easement		
Area BP Deposited Plan 524368	Easement		
Area BQ Deposited Plan 524368	Easement		
Area BR Deposited Plan 524368	Easement		
Area BS Deposited Plan 524368	Easement		
Area BT Deposited Plan 524368	Easement		
Area BU Deposited Plan 524368	Easement		
Area BV Deposited Plan 524368	Easement		
Area BW Deposited Plan 524368	Easement		
Area BX Deposited Plan 524368	Easement		
Area BY Deposited Plan 524368	Easement		
Area BZ Deposited Plan 524368	Easement		
Area CA Deposited Plan 524368	Easement		
Area CB Deposited Plan 524368	Easement		
Area CC Deposited Plan 524368	Easement		
Area CD Deposited Plan 524368	Easement		
Area RA Deposited Plan 524368	Land Covenant		
Area RB Deposited Plan 524368	Land Covenant		
Area RC Deposited Plan 524368	Land Covenant		
Area RD Deposited Plan 524368	Easement		



Title Plan - LT 524368

Created Parcels

Parcels	Parcel Intent	Area	CT Reference
Area RE Deposited Plan 524368	Easement		
Area RF Deposited Plan 524368	Easement		
Area RG Deposited Plan 524368	Easement		
Area RH Deposited Plan 524368	Easement		
Area RI Deposited Plan 524368	Easement		
Area RJ Deposited Plan 524368	Easement		
Area RK Deposited Plan 524368	Easement		
Area RL Deposited Plan 524368	Easement		
Area RM Deposited Plan 524368	Easement		
Area RN Deposited Plan 524368	Easement		
Area RO Deposited Plan 524368	Easement		
Area RP Deposited Plan 524368	Land Covenant		
Area RQ Deposited Plan 524368	Land Covenant		
Area RR Deposited Plan 524368	Land Covenant		
Area RS Deposited Plan 524368	Land Covenant		
Area RT Deposited Plan 524368	Land Covenant		
Area RU Deposited Plan 524368	Land Covenant		
Area RV Deposited Plan 524368	Land Covenant		
Area CH Deposited Plan 524368	Easement		
Area CI Deposited Plan 524368	Easement		
Total Area		<hr/> 21.7489 Ha	

**Land Registration District**

South Auckland

Plan Number

DP 524368

TCC Ref: RC21332-15

Harrison Grierson Ref: 1510-141209-01

Memorandum of Easements (Pursuant to s243 Resource Management Act 1991)			
Purpose	Shown	Servient Tenement	Dominant Tenement
Right of Way Right to drain Water & Sewage Right to convey Electricity, Gas & Water Right to convey Telecommunications and Computer Media	A	Lot 983 hereon	Lots 589-592 hereon
	B	Lot 984 hereon	Lots 601-604 hereon
	C	Lot 985 hereon	Lots 606-609 hereon
	D	Lot 986 hereon	Lots 613-614 hereon
	E	Lot 987 hereon	Lots 630-631 hereon
	F	Lot 988 hereon	Lots 634-639 hereon
	G	Lot 989 hereon	Lots 660-663 hereon
	H	Lot 990 hereon	Lots 666-667 hereon
	I	Lot 991 hereon	Lots 691-692 hereon
	J	Lot 992 hereon	Lots 695-696 hereon
	K	Lot 993 hereon	Lots 699-700 hereon
	L	Lot 994 hereon	Lots 713-714 hereon
	M	Lot 995 hereon	Lots 717-719 hereon
	N	Lot 996 hereon	Lots 723-730 hereon



Memorandum of Easements in Gross (Pursuant to s243 Resource Management Act 1991)			
Purpose	Shown	Servient Tenement	Grantee
Right to drain Water & Sewage	A	Lot 983 hereon	Tauranga City Council
	B	Lot 984 hereon	
	C	Lot 985 hereon	
	D	Lot 986 hereon	
	E	Lot 987 hereon	
	F	Lot 988 hereon	
	G	Lot 989 hereon	
	H	Lot 990 hereon	
	I	Lot 991 hereon	
	J	Lot 992 hereon	
	K	Lot 993 hereon	
	L	Lot 994 hereon	
	M	Lot 995 hereon	
	R	Lot 591 hereon	
	S, AB	Lot 951 hereon	
	T	Lot 602 hereon	
	U	Lot 603 hereon	
	V	Lot 604 hereon	
	W	Lot 605 hereon	
	X	Lot 606 hereon	
Y	Lot 607 hereon		
Z	Lot 608 hereon		
AD	Lot 601 hereon		



Memorandum of Easements in Gross (cont) (Pursuant to s243 Resource Management Act 1991)			
Purpose	Shown	Servient Tenement	Grantee
Right to drain Water & Sewage	AE	Lot 599 hereon	Tauranga City Council
	AF	Lot 598 hereon	
	AG	Lot 597 hereon	
	AH	Lot 596 hereon	
	AI	Lot 595 hereon	
	AJ	Lot 593 hereon	
	AN	Lot 613 hereon	
	AO	Lot 614 hereon	
	AR	Lot 630 hereon	
	AS	Lot 631 hereon	
	AT	Lot 635 hereon	
	AU	Lot 634 hereon	
	AV	Lot 633 hereon	
	AW	Lot 636 hereon	
	AX	Lot 637 hereon	
	AY	Lot 641 hereon	
	AZ	Lot 642 hereon	
	BA	Lot 643 hereon	
	BB	Lot 644 hereon	
	BC	Lot 645 hereon	
BD	Lot 646 hereon		
BE	Lot 647 hereon		
BF	Lot 648 hereon		
BG	Lot 649 hereon		



Memorandum of Easements in Gross (cont) (Pursuant to s243 Resource Management Act 1991)			
Purpose	Shown	Servient Tenement	Grantee
Right to drain Water & Sewage	BH	Lot 650 hereon	Tauranga City Council
	BI	Lot 651 hereon	
	BJ	Lot 652 hereon	
	BK	Lot 653 hereon	
	BL	Lot 660 hereon	
	BM	Lot 655 hereon	
	BN	Lot 950 hereon	
	RE	Lot 674 hereon	
	RF	Lot 675 hereon	
	RG	Lot 676 hereon	
	RH	Lot 677 hereon	
	RI	Lot 678 hereon	
	RJ	Lot 679 hereon	
	RK	Lot 680 hereon	
	RL	Lot 681 hereon	
	RM	Lot 682 hereon	
	RN	Lot 683 hereon	
	RO	Lot 684 hereon	
	BT	Lot 770 hereon	
	BU	Lot 771 hereon	
BV	Lot 772 hereon		
BW	Lot 773 hereon		
BX	Lot 774 hereon		
BY	Lot 775 hereon		



Memorandum of Easements in Gross (cont) (Pursuant to s243 Resource Management Act 1991)			
Purpose	Shown	Servient Tenement	Grantee
Right to drain Water & Sewage	BZ	Lot 776 hereon	Tauranga City Council
	CA	Lot 752 hereon	
	CD	Lot 747 hereon	
	CG	Lot 749 hereon	
Right to drain Sewage	O	Lot 589 hereon	
	P, BO	Lot 590 hereon	
	AA, AC	Lot 951 hereon	
	AM	Lot 612 hereon	
	RD	Lot 631 hereon	
	BQ	Lot 762 hereon	
	BS	Lot 769 hereon	
	CB	Lot 746 hereon	
Right to drain Water	CE	Lot 778 hereon	
	Q	Lot 591 hereon	
	AK	Lot 951 hereon	
	AL	Lot 611 hereon	
	AP	Lot 614 hereon	
	AQ	Lot 628 hereon	
	BP	Lot 742 hereon	
	BR	Lot 761 hereon	
	CC	Lot 779 hereon	
	CF	Lot 777 hereon	
	CJ	Lot 589 hereon	
	CK	Lot 590 hereon	
CL	Lot 690 hereon		
CM	Lot 691 hereon		



Memorandum of Easements in Gross (cont) (Pursuant to s243 Resource Management Act 1991)			
Purpose	Shown	Servient Tenement	Grantee
Right of Way Right to drain Water & Sewage Right to convey Water	N	Lot 996 hereon	Tauranga City Council

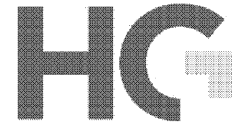
Schedule of Proposed Easements in Gross			
Purpose	Shown	Servient Tenement	Grantee
Right to convey Telecommunications and Computer Media	A	Lot 983 hereon	Ultrafast Fibre Ltd
	B	Lot 984 hereon	
	C	Lot 985 hereon	
	D	Lot 986 hereon	
	E	Lot 987 hereon	
	F	Lot 988 hereon	
	G	Lot 989 hereon	
	H	Lot 990 hereon	
	I	Lot 991 hereon	
	J	Lot 992 hereon	
	K	Lot 993 hereon	
	L	Lot 994 hereon	
	M	Lot 995 hereon	
	N	Lot 996 hereon	



Schedule of Proposed Easements in Gross (cont)			
Purpose	Shown	Servient Tenement	Grantee
Right to convey Gas	A	Lot 983 hereon	First Gas Ltd
	B	Lot 984 hereon	
	C	Lot 985 hereon	
	D	Lot 986 hereon	
	E	Lot 987 hereon	
	F	Lot 988 hereon	
	G	Lot 989 hereon	
	H	Lot 990 hereon	
	I	Lot 991 hereon	
	J	Lot 992 hereon	
	K	Lot 993 hereon	
	L	Lot 994 hereon	
	M	Lot 995 hereon	
	N	Lot 996 hereon	

Schedule of Existing Easements			
Purpose	Shown	Servient Tenement	Dominant Tenement / Document No.
Right to convey Water	CH	Lot 721 hereon	Lot 1 DPS 4351 EI 11041914.3
	CI	Lot 719 hereon	

Schedule of Existing Easements in Gross			
Purpose	Shown	Servient Tenement	Grantee / Document Number
Right to drain Water & Sewage	CH	Lot 721 hereon	Tauranga City Council EI 11041914.4
	CI	Lot 719 hereon	



Schedule of Existing Easements in Gross to be Cancelled			
Purpose	Shown	Servient Tenement	Grantee / Document Number
Right to drain Water	AS DP 494113	Lot 1003 DP 494113	Tauranga City Council EI 8517118.1

Areas CI and RA-RV are subject to a Consent Notice

Amalgamation Conditions

That Lot 983 hereon be held as 4 undivided one quarter shares by the owners of Lots 589-592 hereon as Tenants in Common in the said shares and that individual computer registers be issued in accordance therewith. See request 1447884.

That Lot 984 hereon be held as 4 undivided one quarter shares by the owners of Lots 601-604 hereon as Tenants in Common in the said shares and that individual computer registers be issued in accordance therewith. See request 1447884.

That Lot 985 hereon be held as 4 undivided one quarter shares by the owners of Lots 606-609 hereon as Tenants in Common in the said shares and that individual computer registers be issued in accordance therewith. See request 1447884.

That Lot 986 hereon be held as 2 undivided one half shares by the owners of Lots 613-614 hereon as Tenants in Common in the said shares and that individual computer registers be issued in accordance therewith. See request 1447884.

That Lot 987 hereon be held as 2 undivided one half shares by the owners of Lots 630-631 hereon as Tenants in Common in the said shares and that individual computer registers be issued in accordance therewith. See request 1447884.

That Lot 988 hereon be held as 6 undivided one sixth shares by the owners of Lots 634-639 hereon as Tenants in Common in the said shares and that individual computer registers be issued in accordance therewith. See request 1447884.

That Lot 989 hereon be held as 4 undivided one quarter shares by the owners of Lots 660-663 hereon as Tenants in Common in the said shares and that individual computer registers be issued in accordance therewith. See request 1447884.

That Lot 990 hereon be held as 2 undivided one half shares by the owners of Lots 666-667 hereon as Tenants in Common in the said shares and that individual computer registers be issued in accordance therewith. See request 1447884.

That Lot 991 hereon be held as 2 undivided one half shares by the owners of Lots 691-692 hereon as Tenants in Common in the said shares and that individual computer registers be issued in accordance therewith. See request 1447884.

That Lot 992 hereon be held as 2 undivided one half shares by the owners of Lots 695-696 hereon as Tenants in Common in the said shares and that individual computer registers be issued in accordance therewith. See request 1447884.

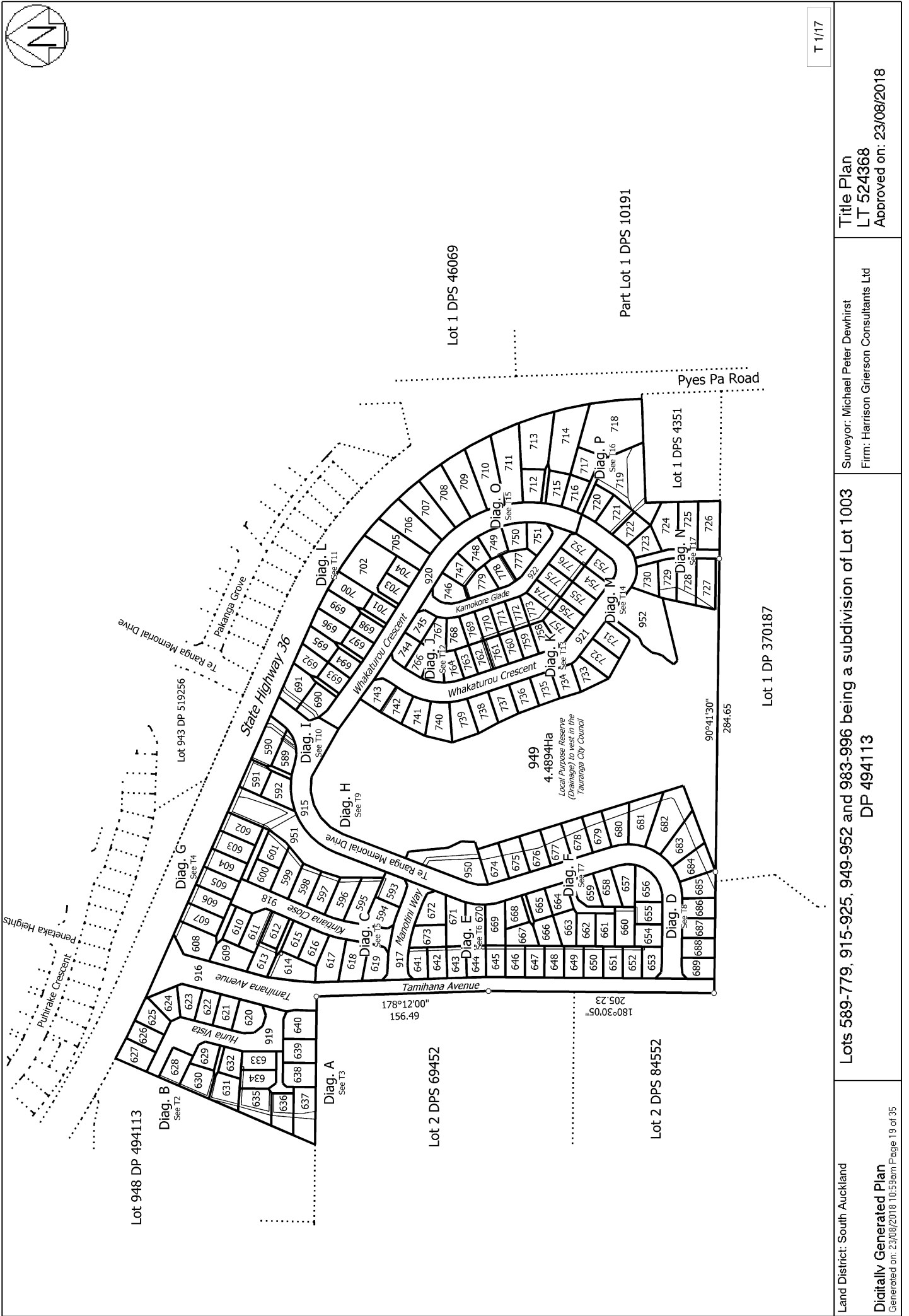
That Lot 993 hereon be held as 2 undivided one half shares by the owners of Lots 699-700 hereon as Tenants in Common in the said shares and that individual computer registers be issued in accordance therewith. See request 1447884.



That Lot 994 hereon be held as 2 undivided one half shares by the owners of Lots 713-714 hereon as Tenants in Common in the said shares and that individual computer registers be issued in accordance therewith. See request 1447884.

That Lot 995 hereon be held as 3 undivided one third shares by the owners of Lots 717-719 hereon as Tenants in Common in the said shares and that individual computer registers be issued in accordance therewith. See request 1447884.

That Lot 996 hereon be held as 8 undivided one eighth shares by the owners of Lots 723-730 hereon as Tenants in Common in the said shares and that individual computer registers be issued in accordance therewith. See request 1447884.



T 1/17

Lot 2 DPS 84552
 Lot 2 DPS 69452
 Lot 1 DP 370187
 Lot 1 DPS 46069
 Lot 1 DPS 10191
 Lot 1 DPS 4351

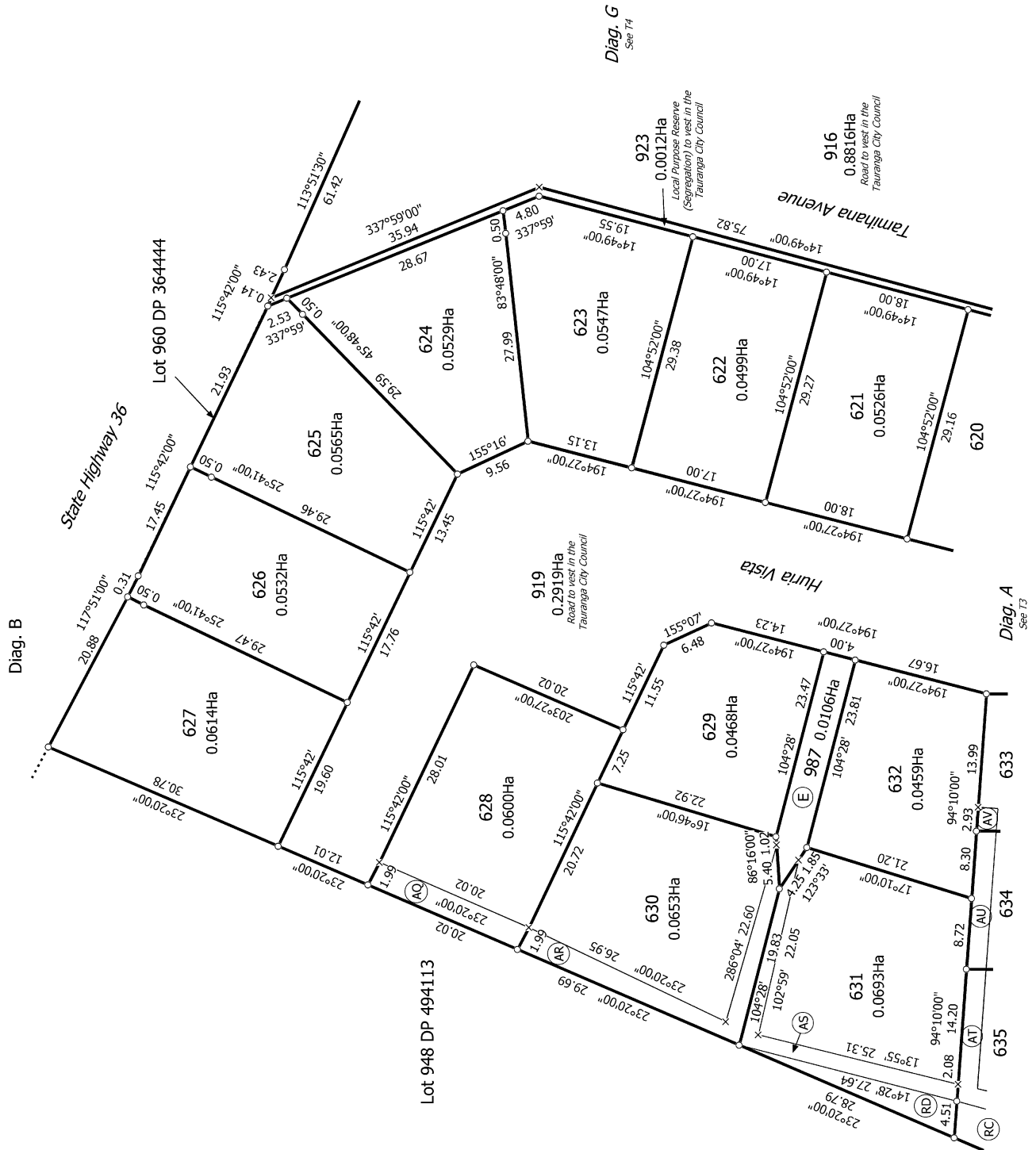
Surveyor: Michael Peter Dewhirst
 Firm: Harrison Grierson Consultants Ltd

Title Plan
 LT 524368
 Approved on: 23/08/2018

Lots 589-779, 915-925, 949-952 and 983-996 being a subdivision of Lot 1003
 DP 494113



Diag. B



Diag. G
See 14

Diag. A
See 13

T 2/17

Land District: South Auckland

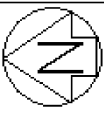
Lots 589-779, 915-925, 949-952 and 983-996 being a subdivision of Lot 1003

Surveyor: Michael Peter Dewhirst
Firm: Harrison Grierson Consultants Ltd

Title Plan
LT 524368
Approved on: 23/08/2018

Digitally Generated Plan
Generated on: 23/08/2018 10:53am Page 20 of 35

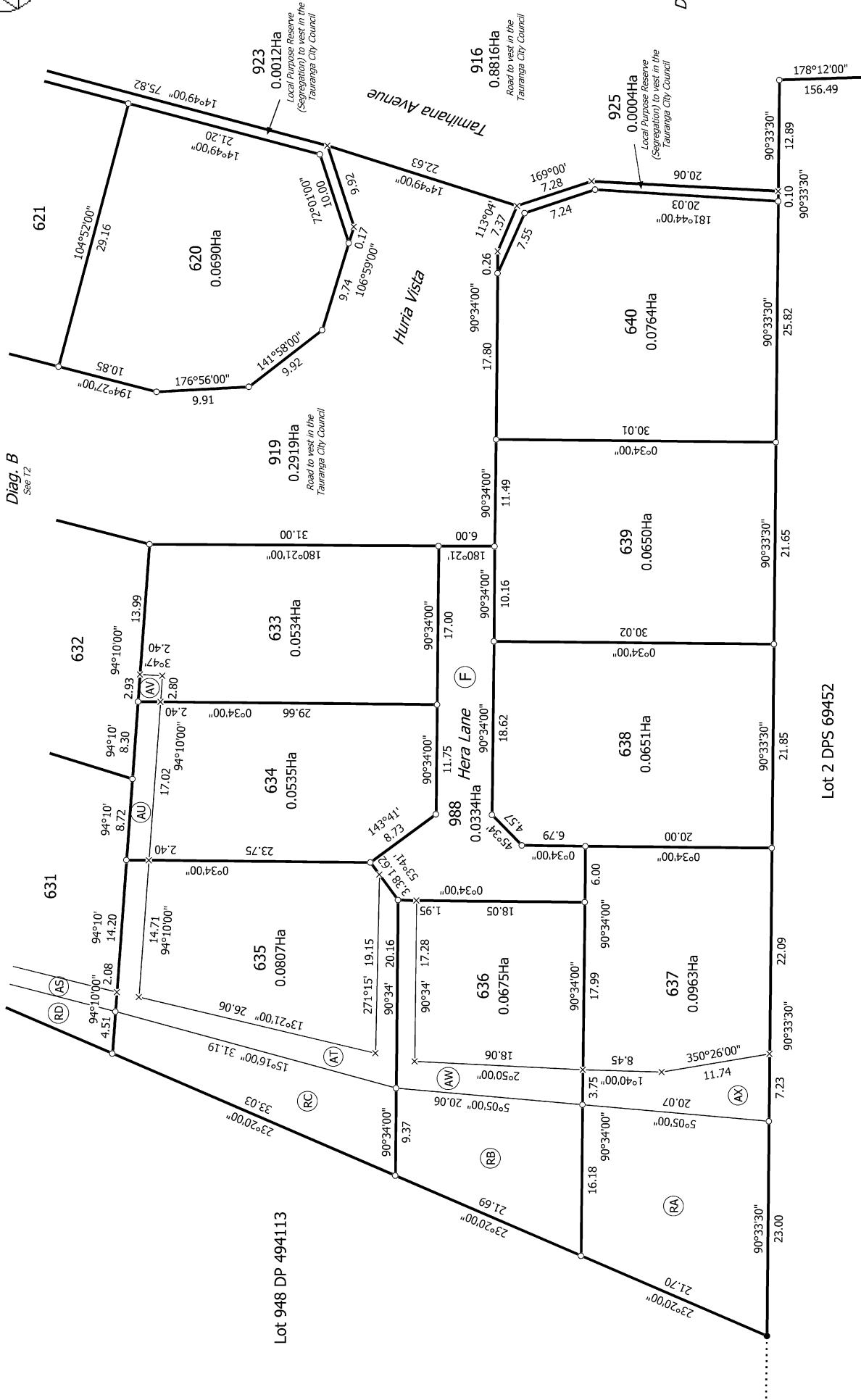
DP 494113



Diag. A

Diag. B
See T2

Diag. C
See T5



T 3/17



T 4/17



Diag. G

Diag. B
See 12

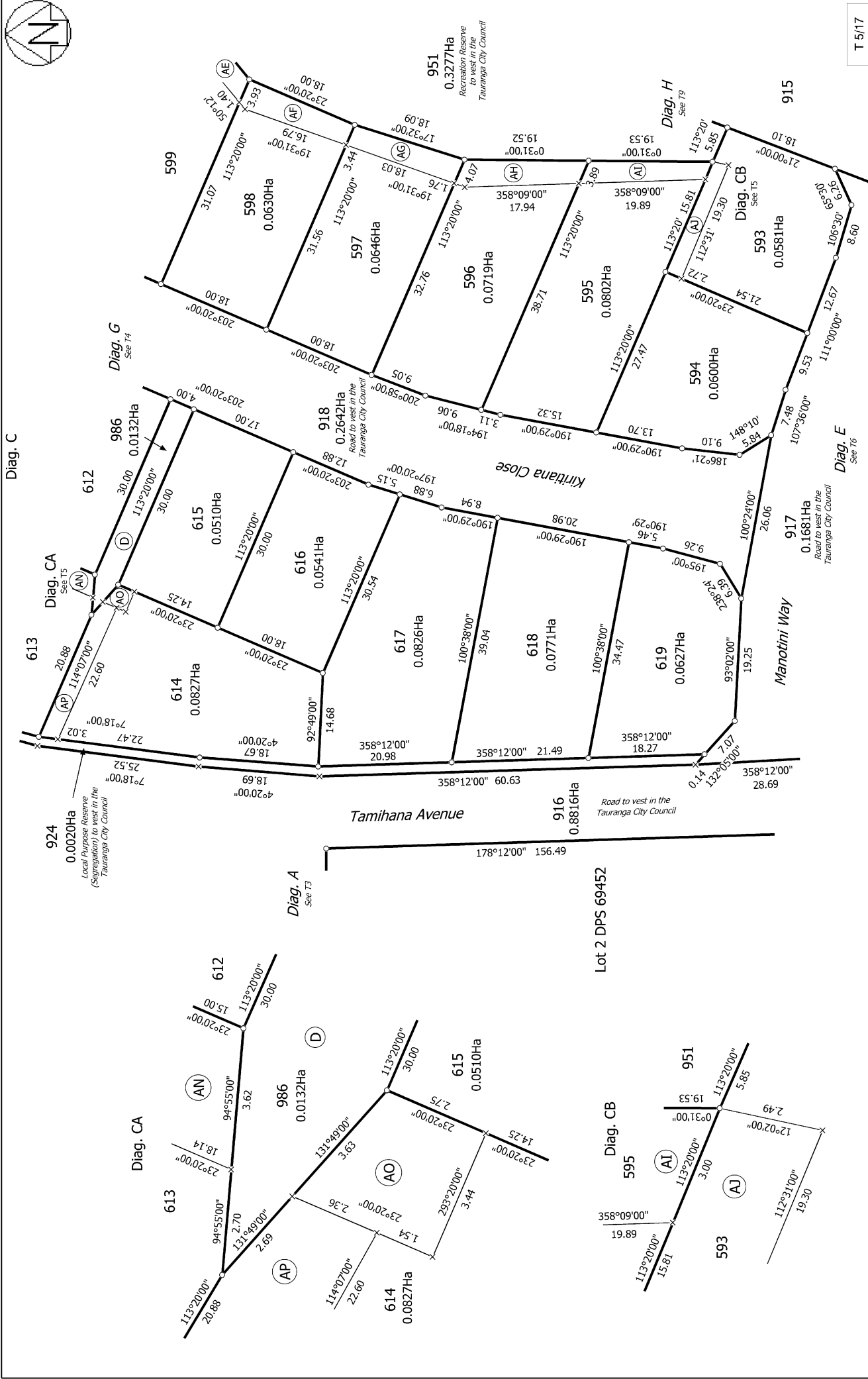
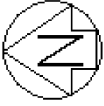
Diag. C
See 15

Diag. H
See 19

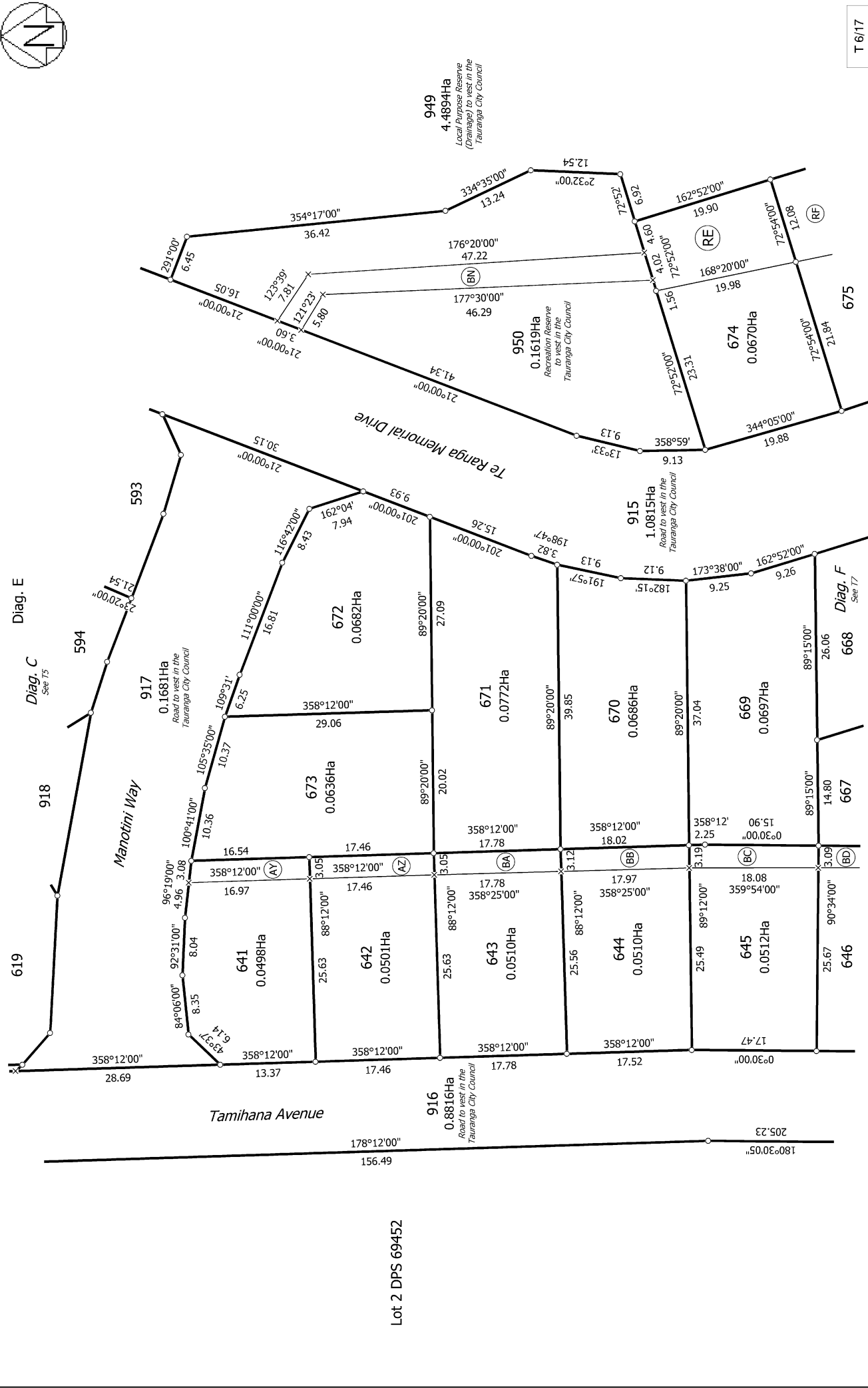
Lots 589-779, 915-925, 949-952 and 983-996 being a subdivision of Lot 1003
 DP 494113

Surveyor: Michael Peter Dewhirst
 Firm: Harrision Grierson Consultants Ltd

Title Plan
 LT 524368
 Approved on: 23/08/2018



T 5/17	Title Plan LT 524368 Approved on: 23/08/2018	Surveyor: Michael Peter Dewhirst Firm: Harrison Grierson Consultants Ltd	Lots 589-779, 915-925, 949-952 and 983-996 being a subdivision of Lot 1003 DP 494113
Land District: South Auckland			Digitally Generated Plan Generated on: 23/08/2018 10:53am Page 23 of 35



Lot 2 DPS 69452

949
4,489.4Ha
Local Purpose Reserve
(Drainage) to vest in the
Tauranga City Council

950
0.1619Ha
Recreation Reserve
to vest in the
Tauranga City Council

915
1.0815Ha
Road to vest in the
Tauranga City Council

916
0.8816Ha
Road to vest in the
Tauranga City Council

T 6/17

Land District: South Auckland

Digitally Generated Plan
Generated on: 23/08/2018 10:53am Page 24 of 35

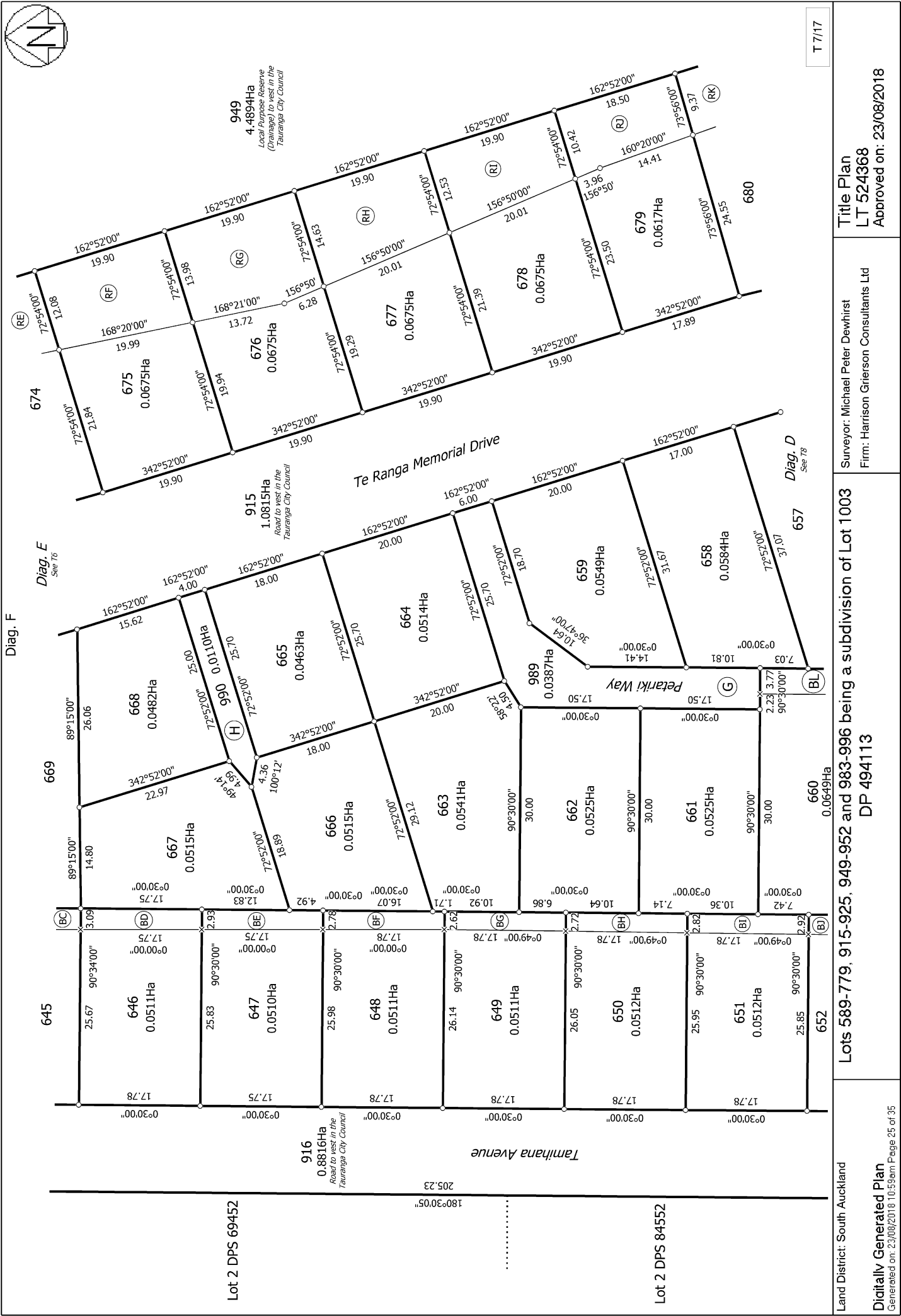
Lots 589-779, 915-925, 949-952 and 983-996 being a subdivision of Lot 1003
DP 494113

Surveyor: Michael Peter Dewhirst
Firm: Harrison Grierson Consultants Ltd

Title Plan
LT 524368
Approved on: 23/08/2018



T 7/17



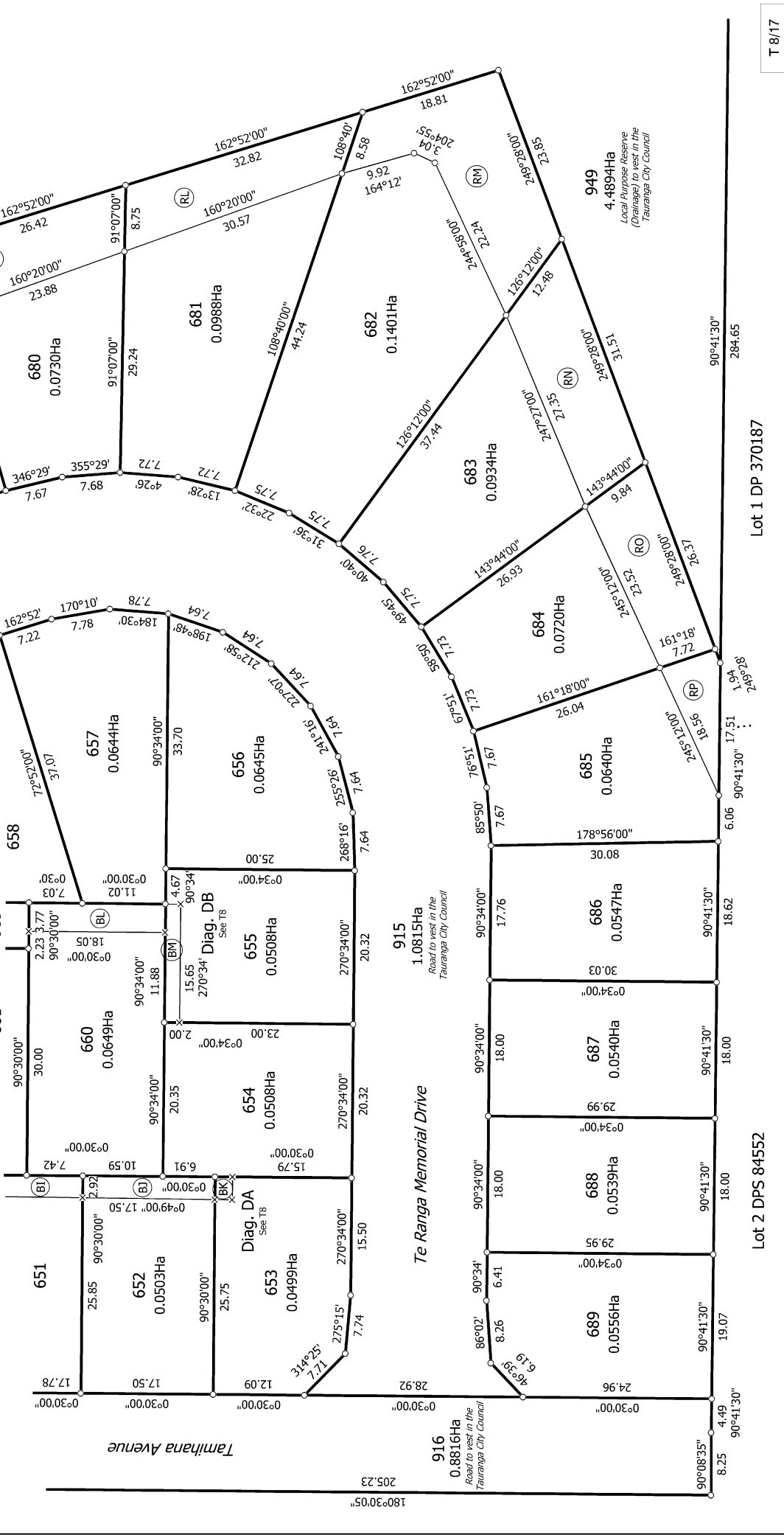
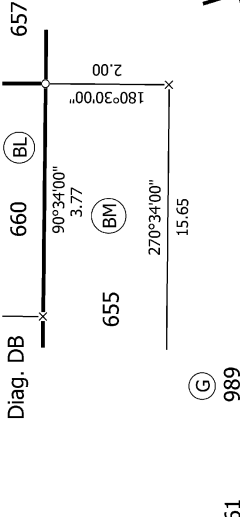
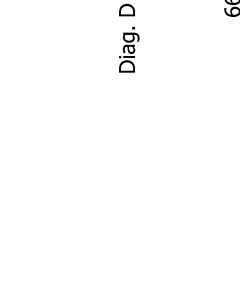
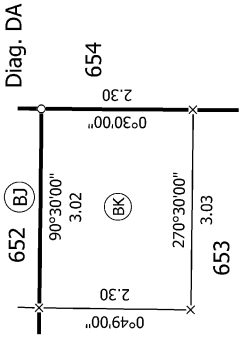
Land District: South Auckland

Digitally Generated Plan
Generated on: 23/08/2018 10:53am | Page 25 of 35

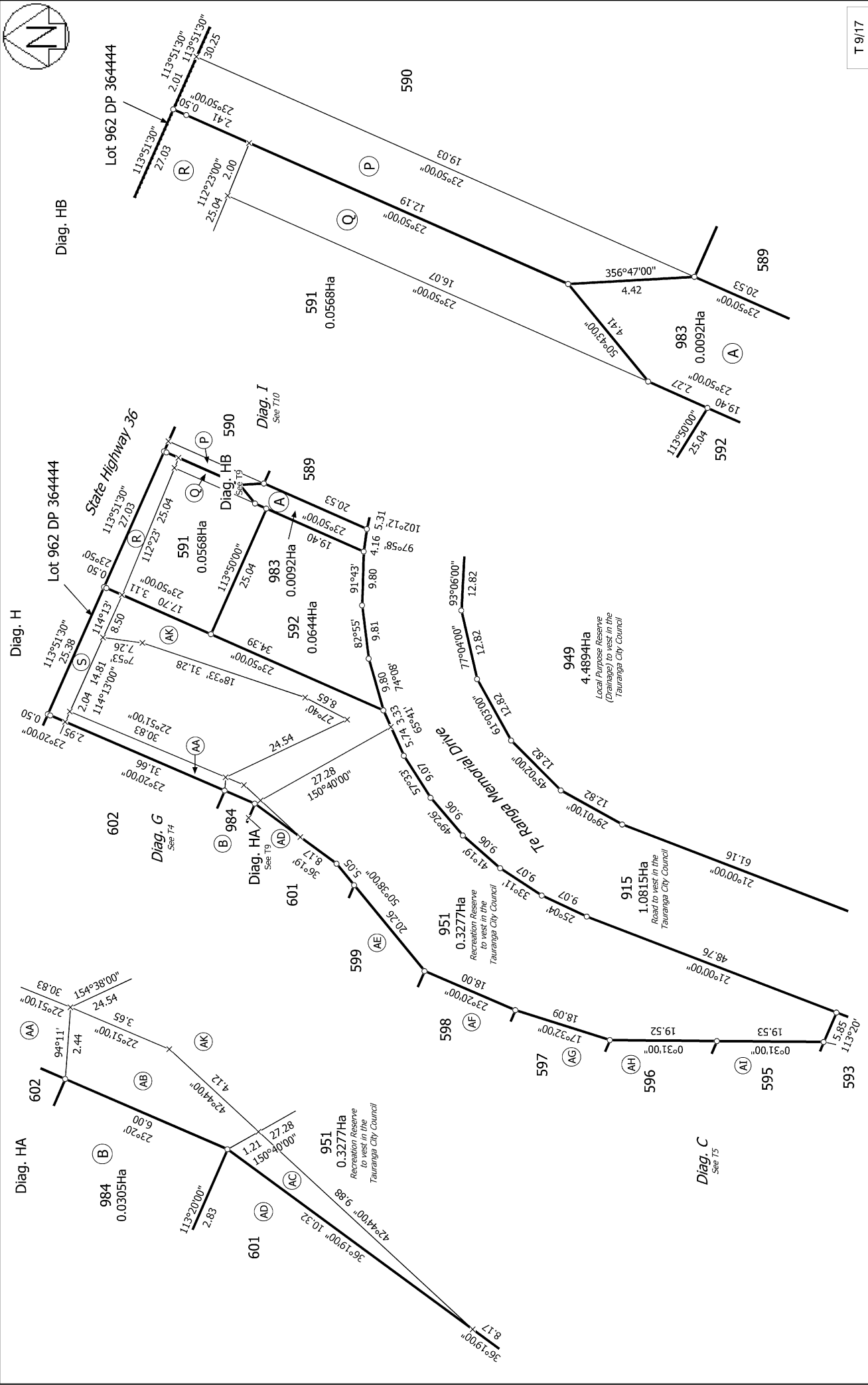
Surveyor: Michael Peter Dewhirst
Firm: Harrision Grierson Consultants Ltd

Title Plan
LT 524368
Approved on: 23/08/2018

Lots 589-779, 915-925, 949-952 and 983-996 being a subdivision of Lot 1003 DP 494113



T 8/17	Title Plan LT 524368 Approved on: 23/08/2018	Surveyor: Michael Peter Dewhirst Firm: Harrision Grierson Consultants Ltd	Land District: South Auckland Digitally Generated Plan Generated on: 23/08/2018 10:53am Page 26 of 35
Lot 1 DP 370187		Lots 589-779, 915-925, 949-952 and 983-996 being a subdivision of Lot 1003 DP 494113	



T 9/17

Land District: South Auckland
 Digitally Generated Plan
 Generated on: 23/08/2018 10:53am | Page 27 of 35

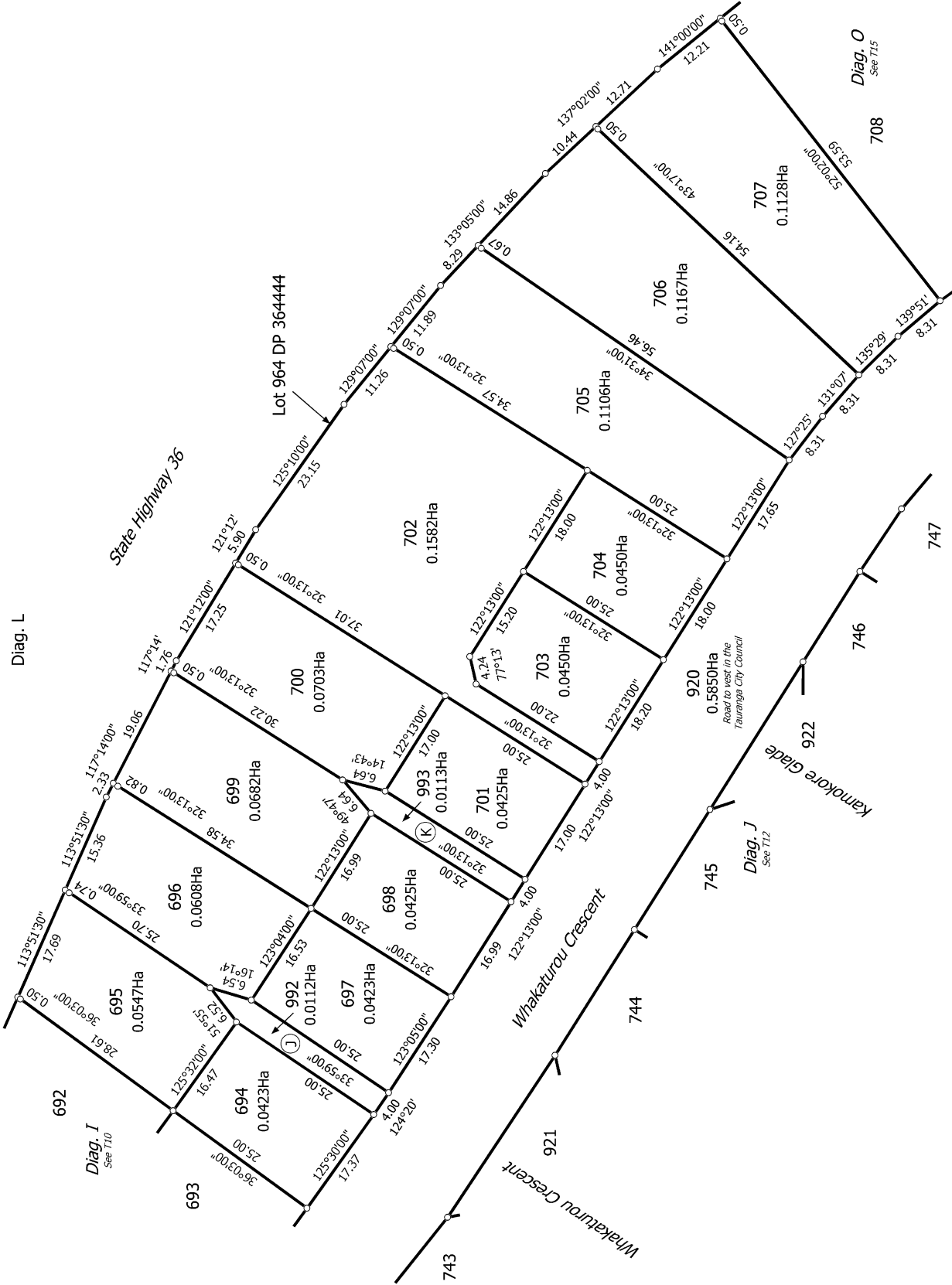
Title Plan
 LT 524368
 Approved on: 23/08/2018

Surveyor: Michael Peter Dewhirst
 Firm: Harrison Grierson Consultants Ltd

Lots 589-779, 915-925, 949-952 and 983-996 being a subdivision of Lot 1003
 DP 494113



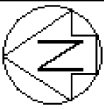
T 11/17



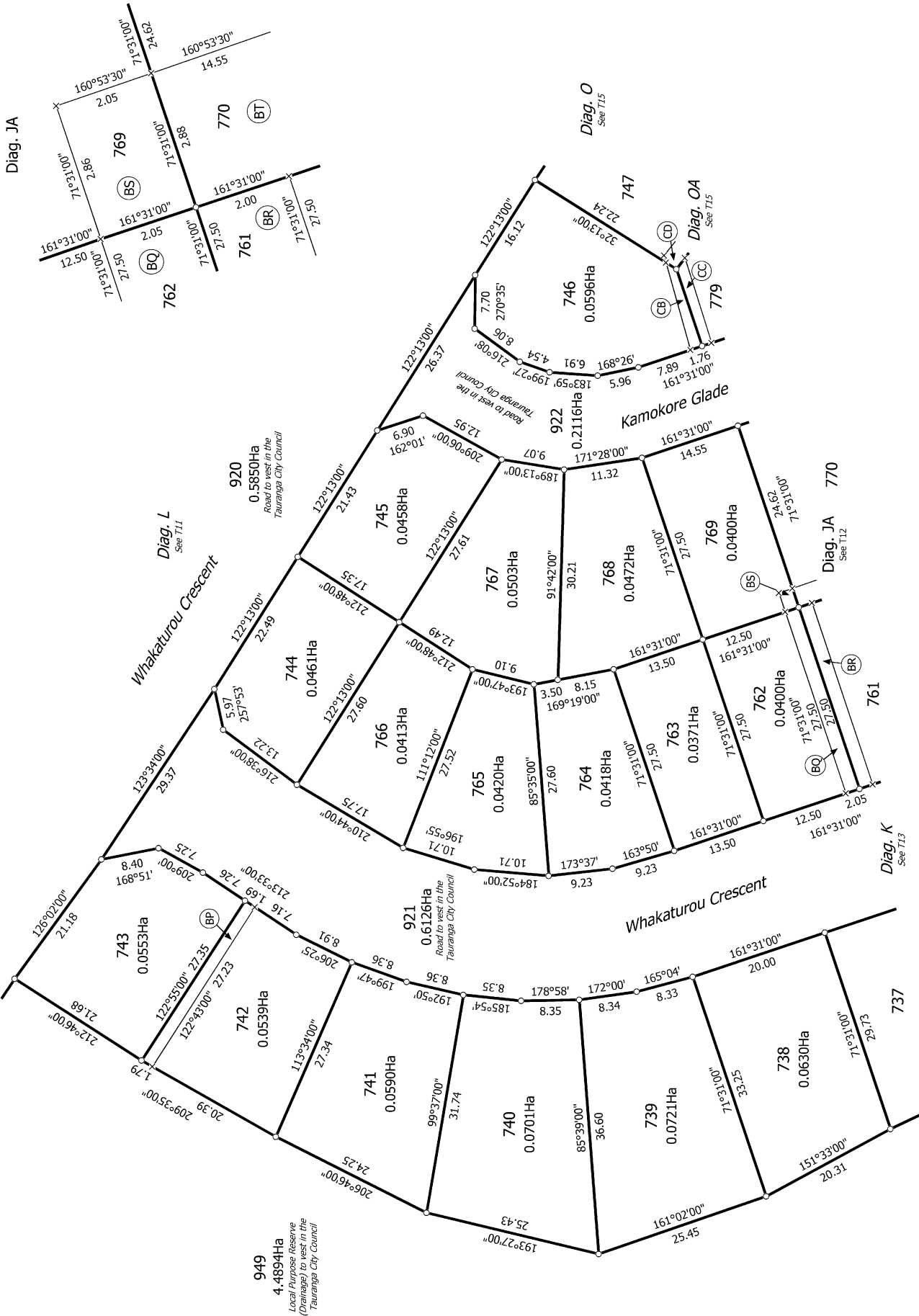
Lots 589-779, 915-925, 949-952 and 983-996 being a subdivision of Lot 1003
 DP 494113

Surveyor: Michael Peter Dewhirst
 Firm: Harrison Grierson Consultants Ltd

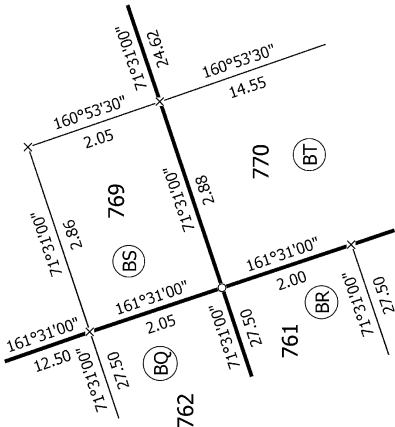
Title Plan
 LT 524368
 Approved on: 23/08/2018



Diag. J



Diag. JA



Diag. L
See T11

Whakaturou Crescent

Diag. O
See T15

Kamokore Glade

Whakaturou Crescent

Diag. K
See T12

Diag. JA
See T12

T 12/17

Land District: South Auckland

Digitally Generated Plan

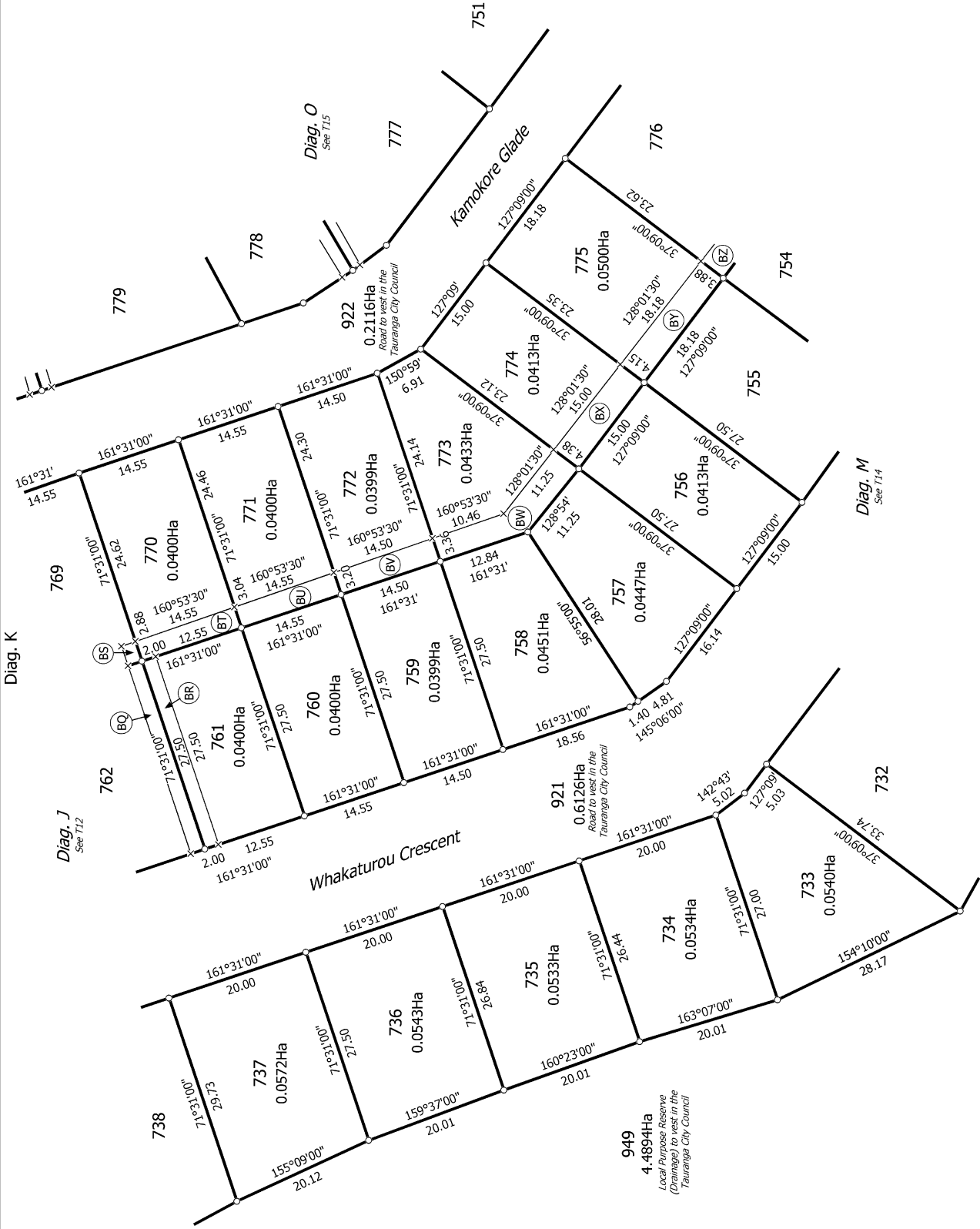
Generated on: 23/08/2018 10:53am Page 30 of 35

Lots 589-779, 915-925, 949-952 and 983-996 being a subdivision of Lot 1003

DP 494113

Surveyor: Michael Peter Dewhirst
Firm: Harrison Grierson Consultants Ltd

Title Plan
LT 524368
Approved on: 23/08/2018



T 13/17

Land District: South Auckland

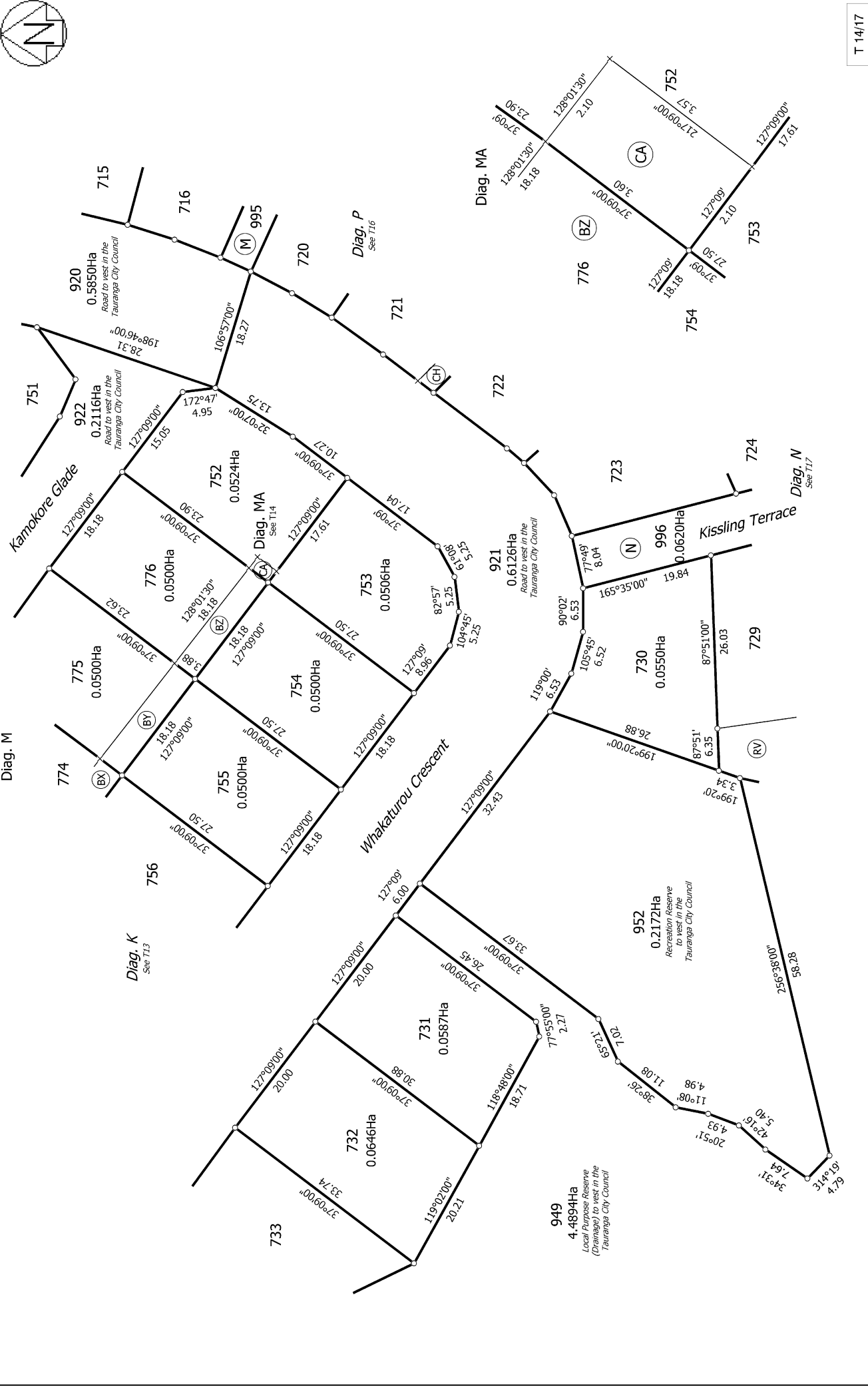
Digitally Generated Plan

Generated on: 23/08/2018 10:53am Page 31 of 35

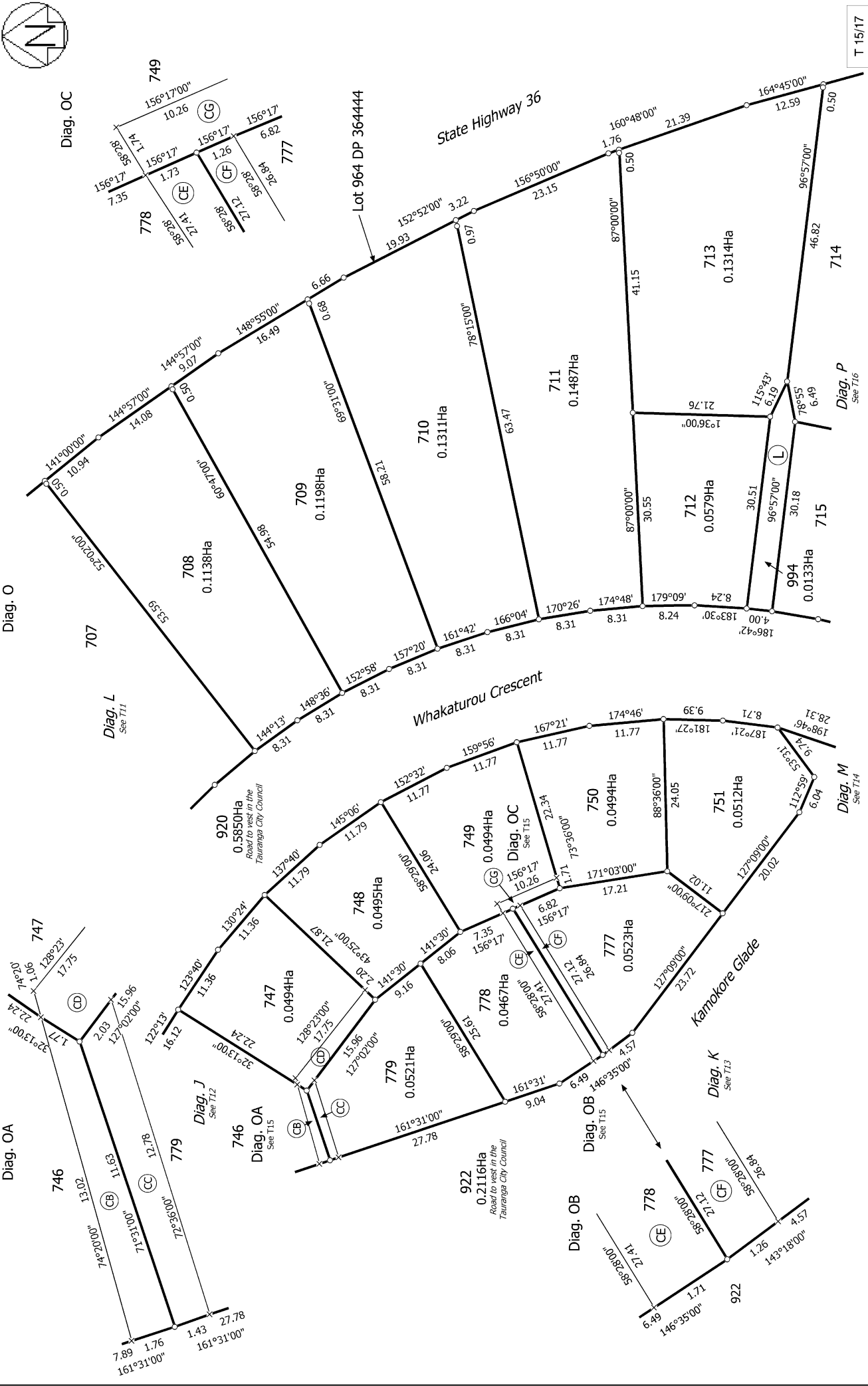
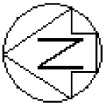
**Lots 589-779, 915-925, 949-952 and 983-996 being a subdivision of Lot 1003
DP 494113**

Surveyor: Michael Peter Dewhirst
Firm: Harrison Grierson Consultants Ltd

**Title Plan
LT 524368
Approved on: 23/08/2018**

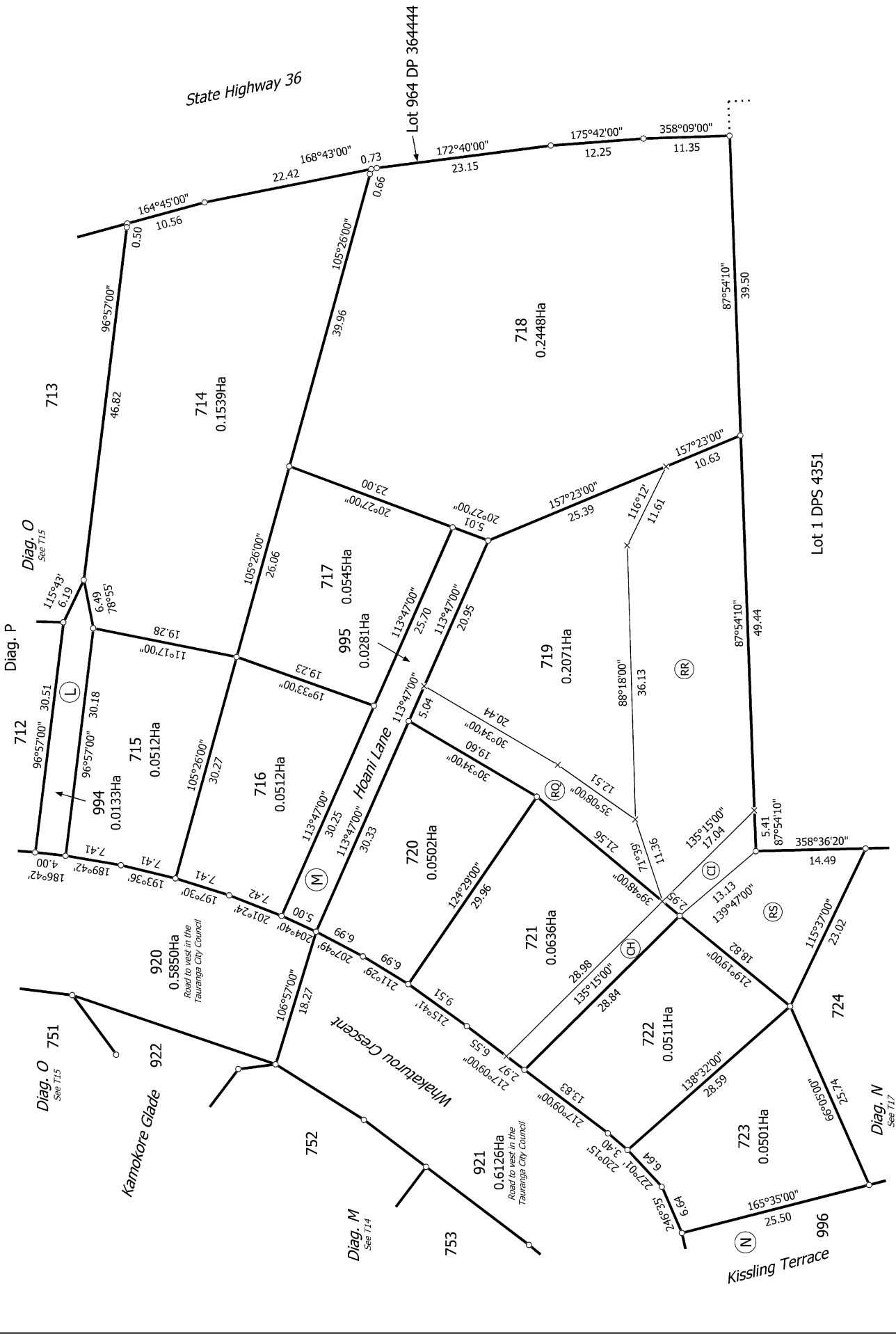


T 14/17



T 15/17

Land District: South Auckland	Surveyor: Michael Peter Dewhirst Firm: Harrison Grierson Consultants Ltd	Title Plan LT 524368 Approved on: 23/08/2018
Lots 589-779, 915-925, 949-952 and 983-996 being a subdivision of Lot 1003 DP 494113		
Digitally Generated Plan Generated on: 23/08/2018 10:53am Page 33 of 35		



T 16/17

Land District: South Auckland
 Digitally Generated Plan
 Generated on: 23/08/2018 10:53am | Page 34 of 35

Lots 589-779, 915-925, 949-952 and 983-996 being a subdivision of Lot 1003
 DP 494113

Surveyor: Michael Peter Dewhirst
 Firm: Harrision Grierson Consultants Ltd

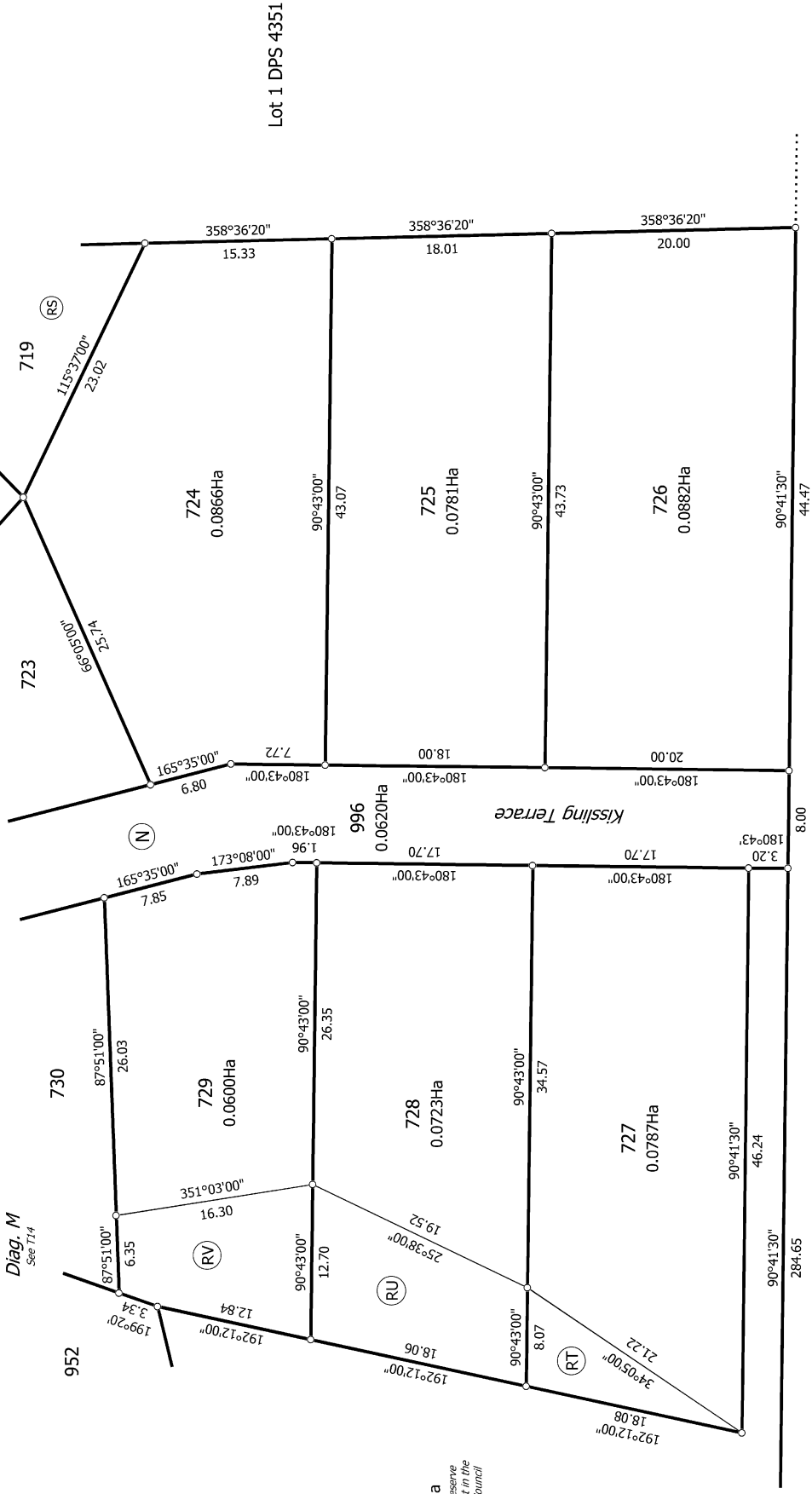
Title Plan
 LT 524368
 Approved on: 23/08/2018



Diag. P
See T16

Diag. N

Diag. M
See T14



Lot 1 DP 370187

T 17/17

Land District: South Auckland

Digitally Generated Plan

Generated on: 23/08/2018 10:53am Page 35 of 35

Lots 589-779, 915-925, 949-952 and 983-996 being a subdivision of Lot 1003

DP 494113

Surveyor: Michael Peter Dewhirst

Firm: Harrison Grierson Consultants Ltd

Title Plan

LT 524368

Approved on: 23/08/2018